



Creative Business Spaces in South Pasadena, California

Home Building A: 3049 sf. Building B: 1905 sf. Building C: 1727 sf. Building D: 1989 sf.

Site Information

[Directions](#)

[Pictures of the front](#)

[Garden pictures](#)

[LA Map](#)

[South Pasadena Map](#)

Building C: 1727 sf.

[Download a brochure](#)

Available Now (\$1.80sf)!

Building C is a lovely two-story creative work space that includes a second story executive office suite opening onto a private balcony overlooking the courtyard with an adjacent administrative assistant's area.

Building C features wall to wall carpeting, a stained wood staircase to the second floor, a wet bar with granite a counter top, and a server room separate from its large open work space.

Key Benefits:

Downstairs:

Large open, airy, and creative work space with skylights and an 18 foot high ceiling!

Small private office.

Wet bar.

Private server room.

Upstairs:

The executive suite with glass walls on two sides, one of them opening up to a large private balcony overlooking the garden courtyard.



Schedule a showing:

For additional information or to schedule a showing, please contact Dr. Ken Herman at:

(323) 344-0123 x1, or

e-mail: ken@docherman.com.

About the Buildings:

Located on prestigious Huntington Drive in beautiful South Pasadena, California.

Quiet residential neighborhood!

The buildings were originally built in 1987 and 1988 by Whitney Smith.

Bathrooms and buildings were remodeled in 2010.



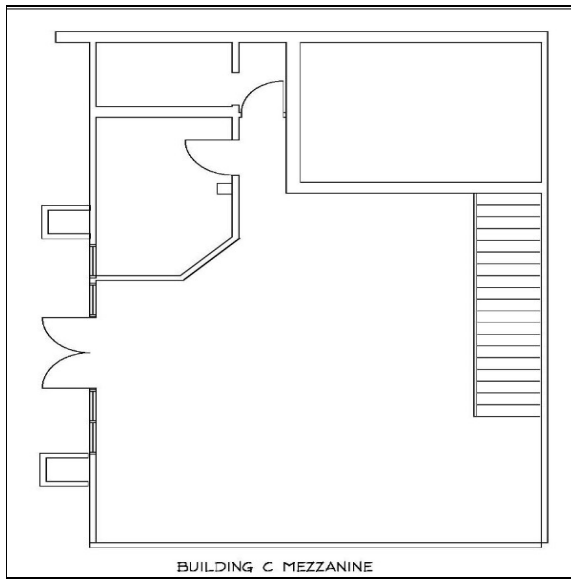
Administrative assistant area adjacent to the executive suite.



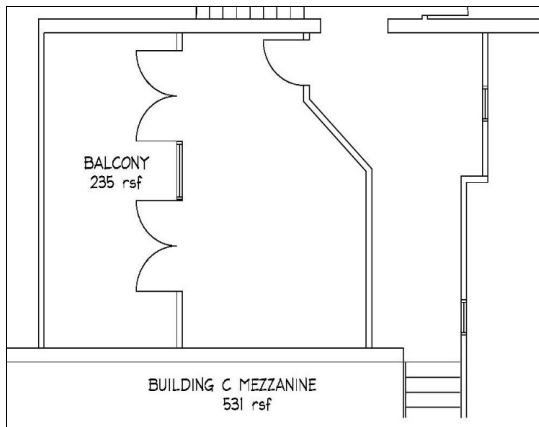
Pictures of Building C:



Floor Plan for Building C:



BUILDING C MEZZANINE



BUILDING C MEZZANINE
531 rsf

Download the web's best [free website templates](#) at [JustDreamweaver.com](#)